



# Introduction to Corteva Agriscience

David Midkiff, Director of Manufacturing Strategy

May 7, 2020

# Our Name

Comprising two parts,  
*/kohr/* which means “heart”,  
and */tehvah/* which means  
“nature”.





Broad offering and robust pipeline across germplasm, biotech traits and crop protection



Low-cost integration and innovation combined with expanded customer offerings in key growth sectors



World-class innovation process and application development capabilities





**CORTEVA™**  
agriscience

## Our Purpose

*To enrich the lives of  
those who produce and  
those who consume,  
ensuring progress for  
generations to come*

## Corteva Agriscience™ Values

### Enrich Lives

*We commit to enhancing lives and the land*

### Stand Tall

*We are leaders and act boldly*

### Build Together

*We grow by working together*

### Be Curious

*We innovate relentlessly*

### Be Upstanding

*We always do what's right*

### Live Safely

*We embrace safety and the environment in  
all we do*



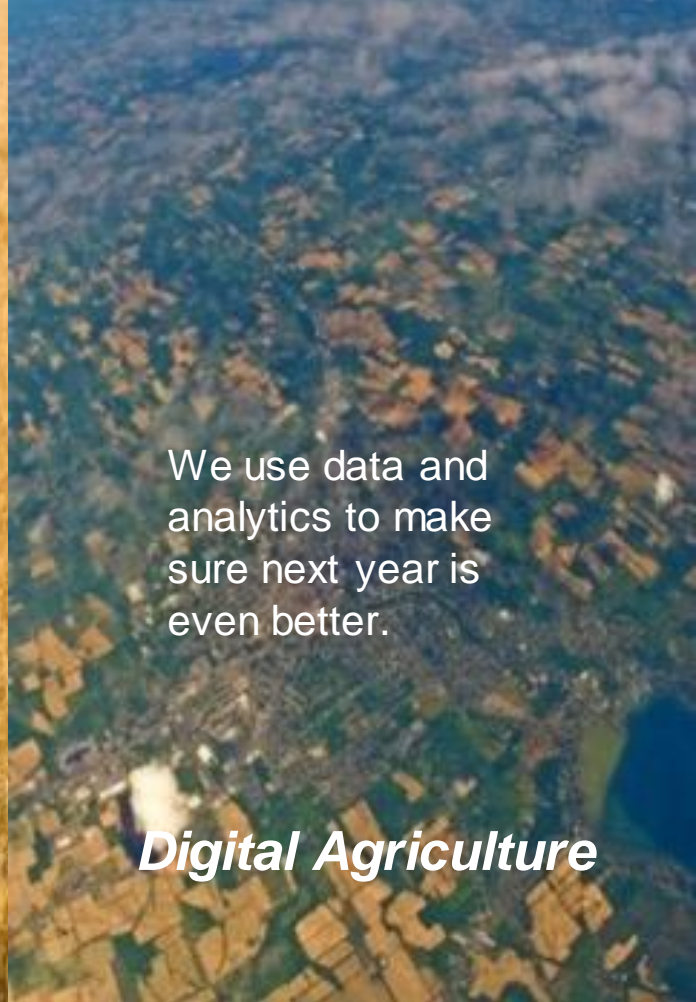
We help farmers get higher yields by protecting crops and the environment.

## *Crop Protection*



We sell seeds that make better food.

## *Seeds Products*



We use data and analytics to make sure next year is even better.

## *Digital Agriculture*

# The Challenges We Take On



**Increasing Pressures on Farmers**



**Feeding a Growing Population**



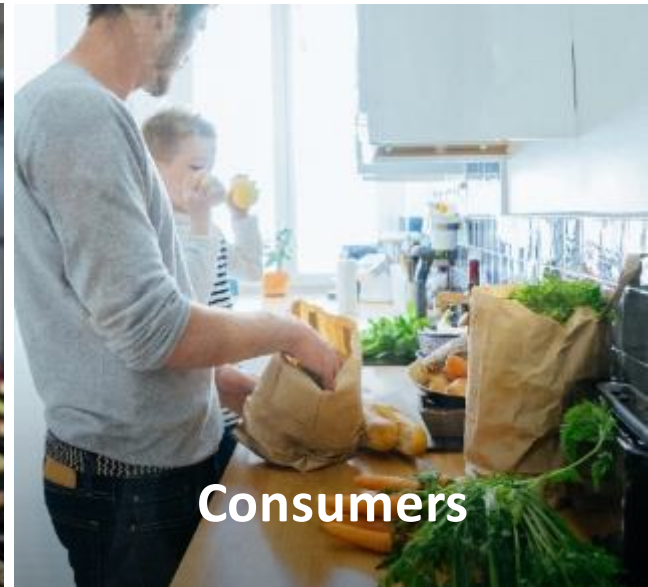
**Food Security**



**Impact of Climate Change**

# Connecting Supply and Demand

We're aligning the food chain from end to end:







A man wearing a wide-brimmed straw hat and dark shorts is walking through a lush green field. He is carrying a long wooden pole across his shoulders, balanced with several bundles of rice seedlings. Water is dripping from the seedlings, creating a misty spray around him. The background shows a vast, open landscape under a clear sky.

# Serving the World



# Global Scale and Unique Routes to Market

**\$14 Billion Net Sales\***



HQ: Wilmington, DE  
Business Centers in IA & IN

**20,000+**  
Colleagues

**130+**  
Countries

**140+**  
R&D Facilities

**~13,000**  
Granted Patents

**100+**  
Production &  
Mfg. Facilities

**65+**  
Active  
Ingredients

Growers are able to work with Corteva through their trusted channel of choice

**Corteva Agriscience™** is a leading, U.S.-based, pure-play agriculture company with a global presence



**MICHIGAN**  
PRACTICAL. PROGRESSIVE. PROUD.

# Midland Industry Park

Founded in 1897, based on Michigan brine deposits, primarily chlor-alkali products



Today: Michigan Operations Industry Park provides manufacturing technology and production for six independent companies



Retains **ownership of the land**.  
Provides **emergency services and waste treatment**



**Owns assets and provides energy & utilities** (electricity, steam, water, air, nitrogen, etc.) and **chemical distribution** (chlorine, caustic, etc.)



Owns assets and provides **truck services**



TRINSEO

Owns assets and provides **rail services**



# Corteva's Midland Location

Our Signature Crop Protection Site

11 manufacturing units producing 15 different herbicide and insecticide active ingredients

- Products used to combat pests and enhance yield from a variety of crops, including corn, soybeans, wheat, rice, fruit, turf and ornamental applications



Center of expertise for process research, technology development and design & construction of manufacturing assets



Single largest manufacturing site globally  
700 employees + 50 contingent staff



Press Release • 10/31/2019

# Corteva Announces Plans to Expand Global Spinosyns Capacity

*Investment in Michigan Facility Targets Future Growth for High-Demand Natural Insecticide Technology*

**WILMINGTON, Del., Oct. 31, 2019** – Corteva, Inc. (NYSE: CTVA) today announced its Board of Directors has approved a \$145 million capital investment in the Company's Midland, Mich. manufacturing facility to expand global capacity for the Company's high-demand insect management technology for the natural products market.

The capacity expansion project was initiated in response to consistently high demand for Corteva's Spinosyns products, including Spinetoram and Spinosad. Staged to come online over the next few years, the new production will enable Corteva to increase its existing Spinosyns capacity by 30% – addressing the needs of customers in the more than 100 countries into which these solutions are sold around the world for use on more than 100 different crops. This investment is expected to generate more than \$100 million of annual EBITDA for Corteva once fully online.



**MICHIGAN**  
PRACTICAL. PROGRESSIVE. PROUD.

